

PART NO.	PART NAME	MATERIAL	QTY.
1	BODY	ASTM A479 SS316	1
2	GLAND BODY	ASTM A479 SS316	2
3	STEM	ASTM A479 SS316	2
4	RETAINER	ASTM A479 SS316	2
5	BOTTOM WASHER	ASTM A479 SS316	2
6	PACKING	PTFE	4
7	VEE TIP	ASTM A564 SS174	2
8	TOP WASHER	ASTM A479 SS316	2
9	THRUST RING	ASTM A240 SS316	2
10	CHECK NUT	ASTM A479 SS316	2
11	HANDLE	ASTM A351 CF8M	2
12	SOCKET SET SCREW	ASTM A193 B8M	2

TESTING

PNEUMATIC TEST: - EACH VALVE IS TESTED WITH NITROGEN AT 2000PSI IN ACCORDANCE WITH MSS-SP-99 FOR SEAT AND PACKING LEAKAGE.
 HYDRO TEST: - PERFORMED WITH PURE WATER IN ACCORDANCE WITH MSS-SP-99, BODY TESTED AT 1.5 TIMES & SEAT LEAKAGE TESTED AT 1.1 TIMES OF THE WORKING PRESSURE.

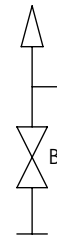
DESIGN STANDARD

PRESSURE & TEMPERATURE RATING ARE SELECTED FROM ANSI B16.34 STANDARD CLASS VALVES BASED ON ANSI B16.34 CLASS 2500 OPTIONAL SOUR GAS SERVICE CONFIRMS TO NACE MR-01-75

NOTES:-

1. ALL DIMENSIONS ARE IN MM. UNLESS SPECIFIED.
2. UNSPECIFIED GEN TOL. : 0.5 MM MAX.
3. UNSPECIFIED GEN ANG. TOL. : 0.1 MAX.
4. UNSPECIFIED ASLY. TOL. : 2MM MAX.
5. WEIGHT:- 945.32 GMS.

INSTRUMENTS



VENT/DRAIN

BLOCK/ISOLATE

PROCESS

TECHNICAL DATA			
Seat	Pressure Rating	Temperature Rating	Orifice
Metal Seat	6000 psi (41300 kpa)	PTFE	4.80mm
		-65 to 450°F -54 to 232°C	
See Pressure Temperature Graph			

TITLE:- 2 VALVE MANIFOLD, REMOTE MOUNT, WP.- 6,000psi,
 PROCESS CONNECTION:-M20x1.5 MALE,
 INSTRUMENT CONNECTION:-M20x1.5 FEMALE, VENT:-1/4" NPTF

DRN.	PS	
CHD.	SS	DATE:- 19-May-20
APPD.	DM	DWG NO.- VM-2-RM/M



APLISENS S.A.

SCALE - NTS

SHEET 1 OF 1

A4

